

celestetic.

PROFESSIONALS



Mes0+II

INSTRUCTION MANUAL

Electromesotherapy device



Version 2023.1

Dear user,

The entire **TEONIA SA** team would like to thank you for your confidence.

To make the most of your purchase and use this appliance correctly, we suggest that you carefully follow the recommendations below:

⚠ WARNING: Before using the system, read and understand all the user documentation.

⚠ WARNING: This device is not designed for medical use. Please do not use it to treat illnesses.

⚠ WARNING: This appliance is intended for professional use only and must be operated by a suitably trained person who is in possession of the following documents of the **celestetic**. ACADEMY.

⚠ WARNING: Unauthorized modification or repair of the control unit, its components or supplies may result in unsafe conditions and/or impaired performance. No modifications to this equipment are permitted without the express permission of **TEONIA SA**.
Unauthorised modifications or repairs will invalidate the warranty. If the appliance malfunctions, please contact **celestetic** customer service. <https://celestetic.com/support/fr/assistance>

⚠ WARNING: **celestetic**. is not responsible for any misuse of the device. It is forbidden to use the appliance with products other than those supplied by **celestetic**.

i NOTE: All the images in the user documentation are examples.
Your hardware and the information on the system screen may differ from that described in the documentation.

i NOTE: Conventions in the user documentation :

i NOTE: Additional information not associated with a risk.

⚠ CAUTION: Use or misuse of the appliance is associated with a risk of minor temporary injury and damage to the equipment.

⚠ WARNING: The use or misuse of this appliance is associated with a risk of serious and/or permanent injury and death.

To contact us

<https://celestetic.com/support/fr/assistance>

Belgium: +32 (0)2 588 76 58

France: +33 (0)1 84 80 93 34

info@celestetic.com

TABLE OF CONTENTS

1. GENERAL PRESENTATION	04
1.1 Electromesotherapy Technique	04
1.2 Presentation of the device	06
1.3 Package contents	07
2. STARTING UP THE APPLIANCE	8
2.1 Installing the appliance	8
2.2 Switching on the appliance	9
3. OPERATION OF THE APPLIANCE	10
3.1 Description of the home screen	10
3.2 Course of an electromesotherapy session	11
4. INDICATIONS, CONTRAINDICATIONS AND SIDE EFFECTS	15
4.1 Indications	15
4.2 Contraindications	16
4.3 Side effects	16
5. GUARANTEE	17
6. TROUBLESHOOTING	17
7. MAINTENANCE	18
8. PRECAUTIONS FOR USE	19
8.1 Instructions for use	19
8.2 Treatment areas	20
8.3 Security	20
9. STORAGE AND TRANSPORT	21
9.1 Storage	21
9.2 Transport	21
10. EXCLUSION OF LIABILITY	22
11. SPECIFICATIONS	22
11.1 Disposal of hazardous materials	22
11.2 Dimensions	22
11.3 Technical data	23
11.4 CE Declaration of Conformity	24
12. EXPLANATION OF SYMBOLS	25

1. GENERAL PRESENTATION

1.1 Electromesotherapy technique

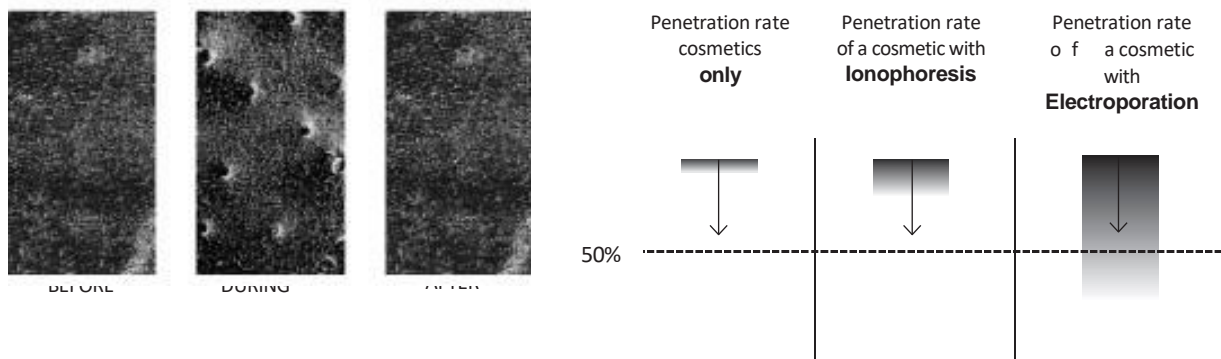
Electromesotherapy or **Electroporation** is the latest major innovation in professional cosmetology. Micro-currents enable a high concentration of active ingredients - up to 80% more - to penetrate to the very heart of the skin, exerting far-reaching beneficial effects.

Electroporation uses weak electrical impulses to create temporary channels in the skin. Temporarily, the permeability of cell membranes increases considerably, enabling deep penetration of active ingredients. When the pulse stops, the cells return to their original structure.

Electromesotherapy coupled with specific blends of Peptides, Collagen, Vitamins and Hyaluronic Acid stimulates fibroblasts to produce more collagen and elastin, resulting in brighter, firmer skin with fewer wrinkles and imperfections.

After several treatments, significant improvements appear, with multiple rejuvenating effects. The skin becomes fresh, radiant and firm, and its cellular metabolism and hydration are restored.

ELECTROPORATION

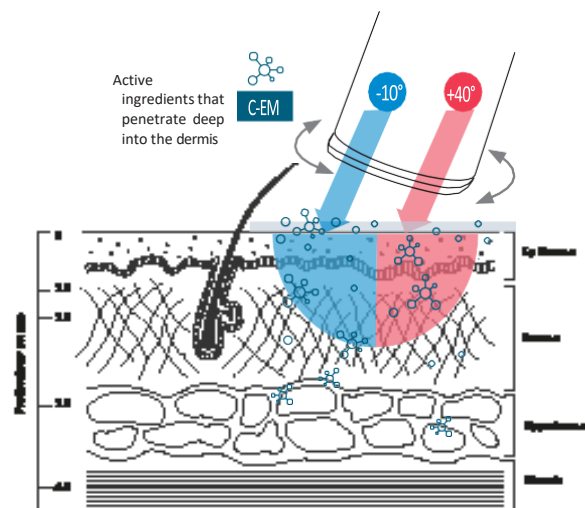


Electromesotherapy or **Electroporation** is a major innovation in professional cosmetology. It allows optimal penetration of the active ingredients contained in **celestetic's** C-EM, serums containing high doses of active ingredients with a real effect on the skin. beneficial for the skin.

With **Electroporation**, you can perform zoning and treat a multitude of indications. You can personalise your treatment by choosing the right serum, and adapt it to each skin type. The main advantage of **Electroporation** is its ability to make active ingredients penetrate the skin. Above all, it can push 'macromolecules', molecules that are usually too large to penetrate the epidermis, such as Hyaluronic Acid, Collagen or certain proteins.

This technique is able to offer results comparable to injections, with no pain, no social eviction and no side effects.

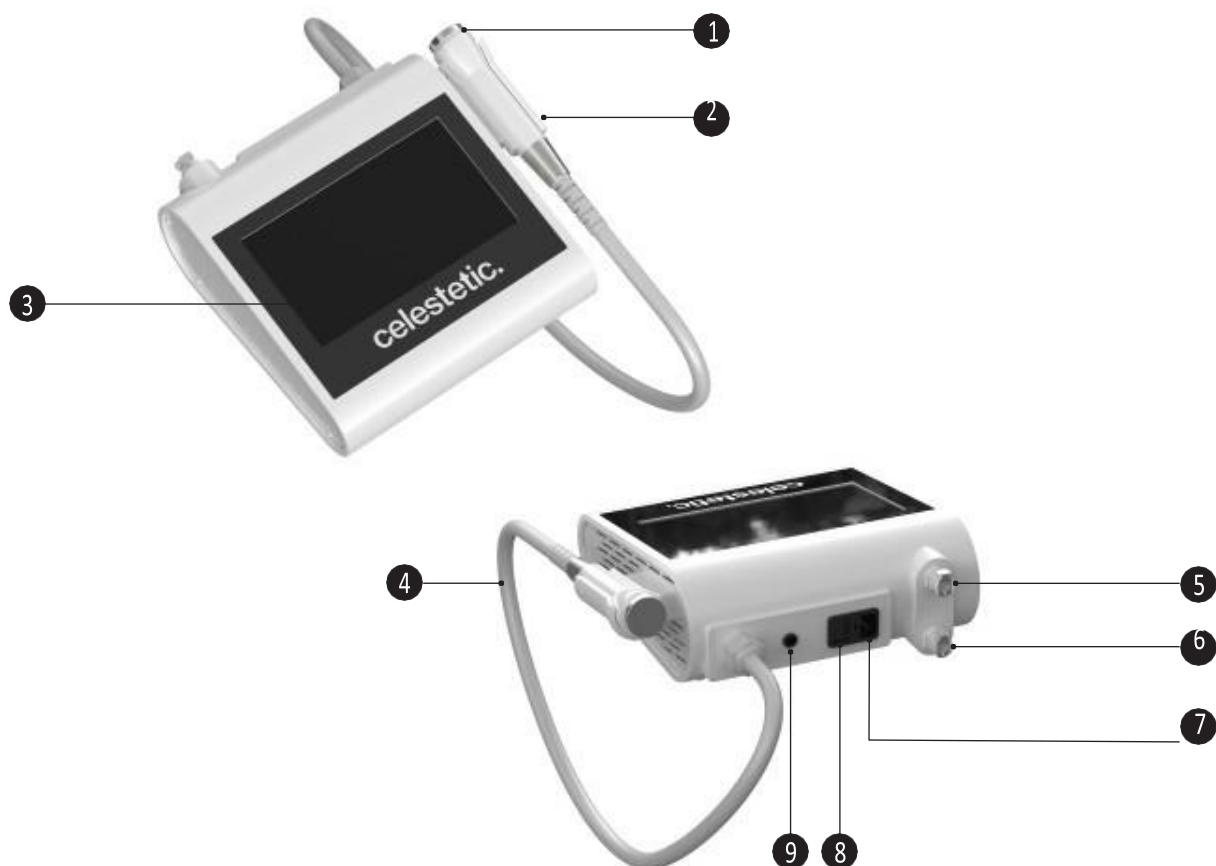
celestetic's C-EM serums, which contain high doses of Hyaluronic Acid and other active ingredients that are extremely effective for the skin, give you immediately visible results after the session. The skin is visibly plumper and smoother, and wrinkles seem to be filled in.



BENEFITS

- > Advanced TEC cooling and heating function (safe, stable cooling and heating: 0~-5C° / 35~45 C°)
- > High penetration rate of solutions
- > Flexible penetration mode: Pulse (-) / Continuous (+)
- > Best delivery system for all types of solutions (ionised solution / Vitamin C)
- > No downtime and less risk of PHI (Post-inflammatory hyperpigmentation) after laser / SMT treatment
- > Compact tip, easy to hold and use

1.2 Presentation of the device

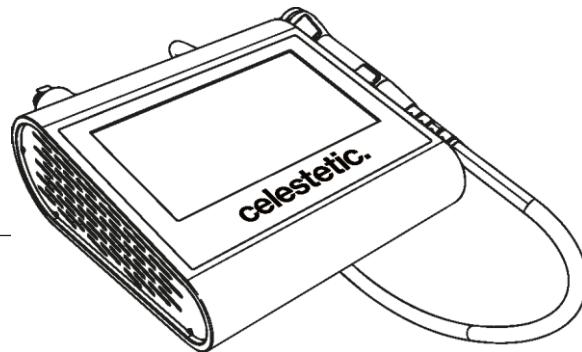


- 1 Electromesotherapy handle
- 2 Handle support
- 3 Touch control screen
- 4 Handle cable
- 5 Water inlet
- 6 Water outlet
- 7 Socket for connecting the appliance
- 8 Switch for switching the appliance on and off
- 9 Socket for conductive probe
- 10 Conductive probe



1.3 Contents of the package

✓ Device



Electromesotherapy handle

✓ Conductive clamp



✓ Power cable

✓ User manual



2. STARTING UP THE APPLIANCE

2.1 Installation of the appliance

Please follow the steps below to install your appliance correctly:

- ❶ Open the package and check that it contains all the components listed in *section 1.3* of this manual. Remove the components from the package one by one and check that nothing is damaged.
- ❷ Connect the treatment handle by inserting the cable into the socket provided on the appliance.
- ❸ Connect the conductor clip to the device by inserting the cable into the socket provided.
- ❹ Connect the power cable to the appliance by inserting it into the socket provided.
- ❺ Connect the water inlet and outlet cables by inserting them into the sockets provided.

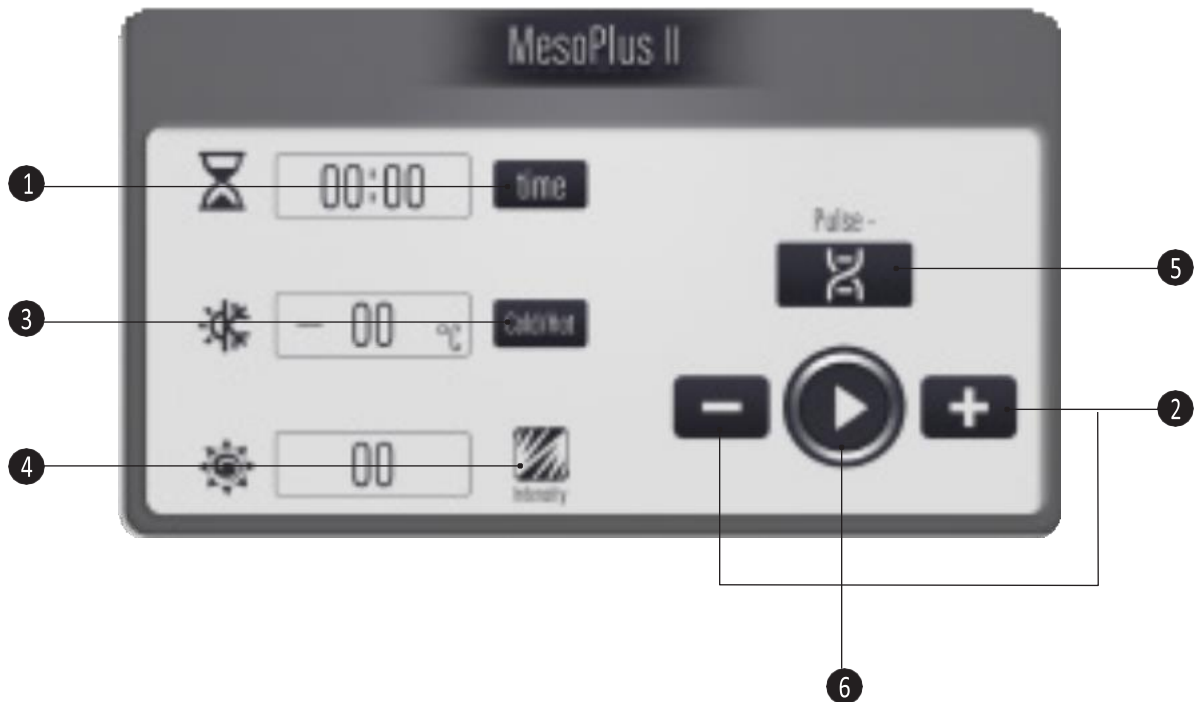
2.3 Switching on the appliance

- ① Connect the machine to a wall socket using the mains power cable.
- ② Press the on/off button to switch on the appliance.



3. OPERATION OF THE APPLIANCE

3.1 Description of the home screen



- ① Press **Time** to select the treatment duration.
- ② Then **+** to increase or **-** to reduce the treatment time.
- ③ Press **Cold/Hot** to select the temperature. Then **+** to increase or **-** to decrease the temperature.
(the temperature range is between -5 and 45°C, for cold use set the machine between -5 and 0° and for hot use between 40 and 45°C)
- ④ Press **Intensity** to select the electroporation intensity, the maximum being 50.
We recommend starting the session between 25 and 30 and then adjusting according to how the client feels.
- ⑤ Press **Pulse -** to put the machine into "Pulse" mode to deliver the chosen serum. If **Pulse -** is not activated, the machine will deliver a continuous flow of electrostimulation.
Once you have set and confirmed all the above parameters and applied the serum(s). Press Start▶
- ⑥ to start treatment.

⚠ WARNING: All these operations must be carried out by a person who has been trained in the use of the appliance by a member of celestetic's staff.

3.2 Course of an electromesotherapy session

3.2.1 Pre-care form and treatment protocol

PRE-CARE FORM

It is **essential to complete and have signed a Pre-Care form before starting treatment**, and to ensure that the patient has no contraindications.

The Pre-Care form is used to study the client's history and is therefore the **1st step in the process. to identify any contraindications.** Please always complete the form **celestetic.**

⚠ WARNING: Completion of the Pre-Care form is **compulsory.**

3.2.2 Adjusting treatment intensity and duration

Parameter	Normal solution	Vitamin C I Whitening Solution	Post-treatment I CO ₂ Laser I SMT	Anti-hair loss
Density	35-40	32-35	30-35	30-35
Duration (min)	10-15min	10-15min	10-15min	10-15min
Temperature (°C)	35-40°C -2~-5°C	35-40°C -2~-5°C	35-40°C -2~-5°C	35-40°C -2~-5°C
Mode	Normal	Pulse	Normal	Normal
Steps treatment	<ol style="list-style-type: none"> ① Heat at 40°C for 5 minutes without electroporation to open the pores ② Apply the solutions to the treatment area ③ Penetrate the solution with Electroporation energy ④ Soothe the skin and close the pores thanks to cooling (-2~-5°C) 			

3.2.3 Setting the temperature

➤ **Use in cryo mode:** down to -5°C, to tighten pores, drain, calm and soothe tissues. Tensing and plumping effect.

Technique Use gentle, slow, circular drainage movements.

➤ **Use with heat:** up to 40°C, to activate blood circulation and dilate pores.

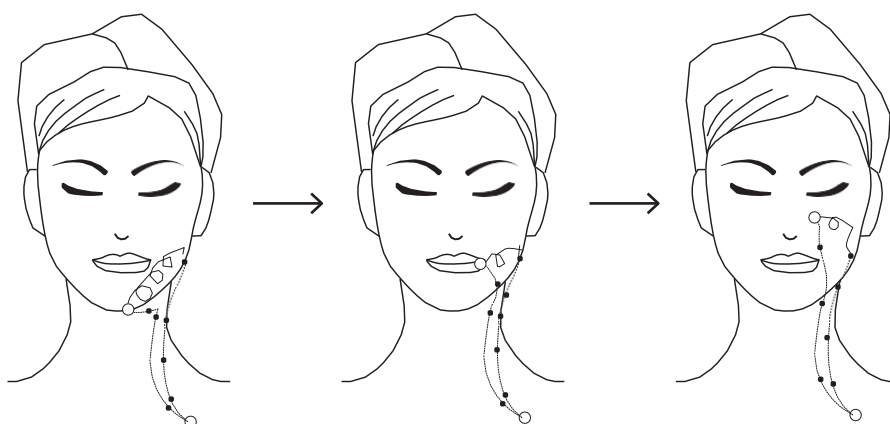
Use linear movements, moving from the inside outwards and smoothing back in. Use as an alternative to microneedling in summer or to increase the skin's elasticity. vasodilation before a treatment.

➤ **Use hot then cold** as a maintenance treatment between 2 sessions of microneedling.

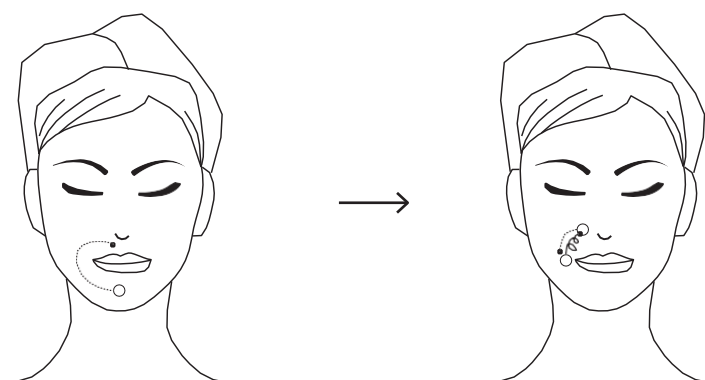
3.2.2 Conduct of a session

Once you have completed the Pre-Care form, the following steps are recommended:

- [1] Disinfect the appliance with a disinfectant wipe, then plug it into the mains.
- [2] Carefully remove make-up with SOFT CLEAN milk and/or cleanse the skin with PURE FOAMER, then apply PREP SOLUTION with a cotton pad.
to ensure that the skin is perfectly clean and disinfected.
- [3] Prepare the mixture of active ingredients: mix one or two C-EMs depending on the indication to be treated, then apply to the area concerned.
with a brush.
- [4] Switch on the device (On/Off button on the back of the device), place the handle on the customer's face and press the Start button. ►
and set the temperature (**Cold/Hot**) and intensity (**Intensity**).
- [5] Give the conductive clip to the client, who will hold it in her hand throughout the session.
- [6] Each zone requires between 6 and 8 passes.



Redefining the oval of the face



Work on the nasolabial fold



Neck wrinkles, double chin and drainage

⚠ WARNING: Eye contour work: To reduce wrinkles, dark circles and puffiness, leave a distance of 1 cm under the eye and smooth from the inside of the eye towards the temple. Repeat the operation 3 to 5 times. Repeat the operation 3 to 5 times, avoiding circular movements and keeping to the recommended distance.

⚠ WARNING: It is imperative that you consult the following carefully and comply with all applicable laws and regulations.
the recommended treatment protocol provided by **celestetic**. before starting the treatment.

⚠ WARNING: This appliance is intended for professional use only and must be operated by a suitably trained person who is in possession of the following documents
of the **celestetic**. ACADEMY.

3.2.2 After the session

- [1] After the treatment, apply GLOBAL PERFECT+ serum to the treated areas and massage to ensure optimum penetration.
- [2] Apply ULTIMATE PROTECT cream.
- [3] Do not apply make-up or other substances to the skin in t h e 2 hours following the session.

4. INDICATIONS, CONTRAINDICATIONS AND SIDE EFFECTS

4.1 Indications

We recommend using the Meso+ II in the following cases:

- > Dull complexion
- > Dryness and dehydration
- > Fine lines, deeper wrinkles and crow's feet Skin
- > slackening
- > Redness, irritation and itching Blackheads
- > and blemishes
- > Atrophic marks Excess
- > sebum
- > Uneven skin tone and hyperpigmentation
- > Dark circles
- > Pockets
- > Orange peel skin
- > Loss of hair and hair mass

To maximise results, we recommend starting the treatment with 4 sessions spaced 3 days apart. Thereafter, a maintenance session every month is recommended.

4.2 Contra- indications

This machine is not recommended in the following cases:

- Wearing a pacemaker Suspicious
- lesions and spots Open wounds
- or sores Active herpes
- Skin disease (Eczema, Psoriasis, Cancer, etc.) History of keloids
- People suffering from epilepsy
- Menstruating, pregnant or breast-feeding women
- People with orthopaedic implants other than dental implants (hip, knee, etc.)
- People with heart disease or pacemakers

4.3 Effects

There are no known side effects associated with treatment with Meso+ II.

Clients may feel a slight sensation of heat on their skin during and a few minutes after the treatment.

5. GUARANTEE

No *Product* may be returned to **TEONIA SA** without its prior written consent. The warranty offered by **TEONIA SA** is strictly limited to the replacement of *Products* found to be defective or non-compliant or, in the case of appliances, to their repair and/or the replacement of defective parts, to the exclusion of all damages, in particular for indirect, commercial, financial, moral, aesthetic or other losses.

The warranty is only valid if the *Products* have been used under normal conditions. In the case of appliances, the warranty only applies if they are used in accordance with the instructions contained in the user manuals. In any event, the warranty is excluded in the event of misuse, negligence, handling error or unauthorised mixing with components and/or products of any other origin or modification by the *Customer*. Any unauthorised modification or repair will invalidate the warranty.

In the case of appliances, the guarantee covers parts and labour but does not cover travel costs, which will be invoiced at the hourly rate.

In the case of equipment, the warranty shall not apply in the event of resale to a third party unless expressly agreed by **TEONIA SA**.

6. TROUBLESHOOTING


If you have any problems, please contact our Customer Service department for a consultation as soon as possible:

<https://celestetic.com/support/fr/assistance>

⚠ WARNING: Unauthorised modification or repair of the control unit, its components or supplies may result in hazardous conditions and/or impaired performance. No modification of

No use of this equipment is permitted without the express permission of **TEONIA SA**.

7. MAINTENANCE

- As the handle and conductive clip are in contact with the customer's skin, they must be carefully cleaned after each treatment with 70° alcohol using cotton wool or a handkerchief.
- To clean the junction between the handle and the treatment head, use 70° alcohol.
- Change the water twice a month.
- Do not use the appliance if the electrical voltage is unstable.
- If the appliance's fuse is short-circuited due to unstable or excessive electrical voltage, use the spare fuse located at the power switch, replace the damaged fuse and resume use of the machine.
- When the display shows **WATER**  in the top right-hand corner, this means that the tank is empty, please fill it with water using the funnel supplied.



8. PRECAUTIONS FOR USE

8.1 Instructions for use

⚠ WARNING: Please read the following warnings carefully:

- Minors are not authorised to use this appliance. If necessary, please agree to treatment under professional supervision.
- During menstruation and pregnancy, women are temporarily suspended from using this device.
- People suffering from heart disease, who have pacemakers installed in their bodies or who are undergoing metal bone grafting must not use this device.
- Children must be supervised to ensure that they do not play with the appliance. Do not leave within the reach of children.
- Before using the system, read and understand all the user documentation. Do not touch the device
- if it has been dropped into water or any other liquid.
Unplug the appliance immediately.
- Unauthorised modification or repair of the control unit, of its components or supplies may result in unsafe conditions and/or impaired performance. No modification of this equipment is permitted without the express permission of **TEONIA SA**.
- Unauthorised modifications or repairs will invalidate the warranty. If the appliance malfunctions, please contact **celestetic** customer service.
<https://celestetic.com/support/fr/assistance>
- If the appliance is broken, do not touch any internal part to avoid electric shock. Never insert objects into the appliance. Do not use the appliance if it is not working properly or appears to be damaged. Only use the parts supplied with the appliance.
- Keep the appliance out of the reach of children. Use of this appliance by people with reduced physical, sensory or mental capabilities or who lack experience or knowledge can cause accidents unless a person responsible for their safety shows and explains to them how to use the equipment. of the device.
- Before cleaning your appliance, make sure that the switch is OFF, that the appliance is de-energised and that the power cord is disconnected from the charger base.
- The appliance is intended for professional use only and must be operated by a suitably trained person who holds the **celestetic**. ACADEMY CERTIFICATE.

- This device must not be used near or in contact with any other appliance.
If necessary, however, it should be checked to ensure that it is working properly under normal conditions of use.
- Communication equipment such as home wireless network devices, mobile phones, cordless phones, their base stations, walkie-talkies, may affect this device and should therefore be kept at a distance of at least 3.3 m.
- Keep away from flammable aerosols and sources of oxygen.
- Note: this list is not exhaustive. If you are not sure whether you can use the device, please consult a doctor.

8.2 Areas of treatment

Face, eye contour, neck and décolleté, hands, hair, body.

⚠ WARNING: This machine cannot be used for treatments above the neck. Only on the body."

⚠ WARNING: The device cannot be used on the throat, genitalia and the area above the neck".

8.3 Security

The appliance must be operated by a suitably trained person who holds the **celestetic**.
ACADEMY CERTIFICATE.

9. STORAGE AND TRANSPORT

9.1 Storage

Store treatment heads in a safe, dry place where they will not be damaged. The handpiece and conductive clip must be kept clean and dry.

⚠ WARNING: The system may not operate as intended if stored or operated in conditions of excessive heat, humidity or atmospheric pressure. Store the system in a room that meets the stated requirements.

⚠ WARNING: Using the system in an oxygen-rich environment may cause a fire. Do not use the system in an environment rich in oxygen.

9.2 Transport

Please store the device and its accessories in the carrying case supplied or in a similar closable container to protect all components from external forces and environmental impacts such as mechanical stress (scratches), dust or moisture.

⚠ WARNING: The distilled water contained in the machine must be drained off before transport.

10. EXCLUSION OF LIABILITY

TEONIA SA is not responsible for the following circumstances: > User mishandling, operator error, etc.

> Damage caused by use

> Operation without having read the manual > Poor maintenance of the appliance

> In the event of fire, earthquake or war

⚠ WARNING: celestetic. accepts no responsibility for any misuse of the device. It is forbidden to use the appliance with products other than those supplied by celestetic.

11. SPECIFICATIONS

11.1 Disposal of hazardous materials

Various components of the system may contain materials whose disposal is subject to regulation. Dispose of all system components in accordance with applicable regulations. Contact your local environmental authority for further information on recycling or disposal of the system in your area.

11.2 Dimensions

The system and its components are designed to function normally when stored, shipped and operated under the following conditions.

	Height	Depth	Width	Weight
No packaging	35cm	33 cm	12.8 cm	5 kg

11.3 Technical data

Model	EP1
Power ratings	40 W
Screen	10.1 pixel HD
Voltage	DC 0~30V
Intensity	1-50 (Max 30Vp-p $\pm 15\%$ up to 500 μ)
Temperature	Cold: -5~0°C Hot: 35~45°C
Power supply	100-240 V, 50/60 Hz
Weight	5 kg
Dimensions	35 cm x 33 cm x 12.8 cm

11.4 EC declaration of conformity

These products

- ① comply with the EMC Directive: 2014/30/EU, and meet the requirements of EN55014-1 , EN61000-3-2 , EN61000-3-3 , EN55014-2.
- ② comply with the Low Voltage Directive: 2014/35/EU, and meet the requirements of EN60335-1, EN60335-2-115, EN62233.
- ③ have been manufactured in facilities with a comprehensive Quality System based on EN ISO 13485:2016.

This Compliance has been duly documented using a checklist created from the relevant directives and standards.

This documentation includes both product-specific documents and process-related documents (Quality System).













The Declaration of Conformity is issued under the sole responsibility of **TEONIA SA.**

This Declaration is issued by **TEONIA SA.**

This Declaration is signed, certifying that these requirements have been met and documented.

12. EXPLANATION OF SYMBOLS

The following symbols are used on the system components, supplies and packaging.

<p>Manufacturer</p> 	<p>Indicates the manufacturer of the medical device, as defined in Directives 90/385/EEC, EU Directives 93/42/EEC and 98/79/EC</p>	<p>Keep out of the rain</p> 	<p>Indicates that the appliance must always be kept away from rain or any source of moisture</p>
<p>Refer to the manual instructions/booklet</p> 	<p>To show that the instruction manual / booklet must be read</p>	<p>Caution</p> 	<p>Indicates the need for the user to consult the instructions for use for important warnings and cautions, such as precautions which, for various reasons, cannot be presented on the medical device itself</p>
<p>European conformity or Conformité Européenne</p> 	<p>Indicates the manufacturer's declaration that the product complies with the essential requirements of the relevant European legislation on health, safety and environmental protection.</p>	<p>Do not use if packaging is damaged</p> 	<p>Indicates a medical device that must not be used if the packaging has been damaged or opened.</p>
<p>Catalogue number</p> 	<p>Catalogue number badge of the manufacturer so that the medical device can be identified</p>	<p>Serial number</p> 	<p>Indicates the manufacturer's serial number so that a device can be identified</p>
<p>Special disposal methods are required for this electrical appliance</p> 	<p>See local and national regulations</p>	<p>Handle with care</p> 	<p>Indicates that the carton and its contents must be handled with care with care</p>
<p>Fragile</p> 	<p>Indicates that the appliance contained in this packaging is fragile</p>	<p>Eco packaging</p> 	<p>Indicates that this packaging is environmentally friendly</p>

celestetic.



Version 2023.1